

August 12, 2025

To,
The Manager,
Listing Department
National Stock Exchange (NSE),
Exchange Plaza,
Plot no. C/1, G Block,
Bandra Kurla Complex
Bandra (East),
Mumbai - 400 051.

Sub.: Investor Presentation – Disclosure under Regulation 30 of Securities and Exchange Board of India (Listing Obligations and Disclosure Requirements) Regulations, 2015

Company Symbol: FELIX

Dear Sir/Madam,

Pursuant to Regulation 30 of SEBI(Listing Obligations and Disclosure Requirements) Regulations, 2015, please find enclosed herewith the Investor Presentation for your records.

The same is also being uploaded on the company's website.

You are requested to take the above information on your record.

Thanking you,

Yours faithfully,
FOR FELIX INDUSTRIES LIMITED

Hena Harshal Shah
Company Secretary and Compliance Officer
(F-12582)

The background of the slide features a composite image. On the left, a portion of the Earth is visible, showing blue oceans and white clouds. In the foreground, there are green leaves of a plant. The right side of the image is a dark, teal-colored space with numerous small, out-of-focus white and blue dots, resembling a starry night sky or a microscopic view. The word "Felix" is written in a large, white, sans-serif font across the top center, with a registered trademark symbol (®) to its upper right.

Felix[®]

Bringing the Change the world needs

Felix Industries Limited

Investor Presentation
August 2025

Table of Content

- 1 Business Update
- 2 Company Overview
- 3 Business Overview & Segments
- 4 Industry Scenario & Market Opportunity
- 5 Order Book Details

Business Update



Financial Updates

INR 2,062.0 Lakhs

Revenue from Operations

 **158%** YoY

INR 597.8 Lakhs

EBITDA

 **377%** YoY

INR 356.8 Lakhs

PAT

 **1042%** YoY

Business Updates*

EPC Order

Infrastructure & Construction company

₹ ~32.57 crores

Execution Time - 9 Months

2 MLD Common Effluent Treatment Plant (CETP) Systems

EPC Order

Pharmaceutical company

₹ 7.58 crores

Execution Time - 3 Months

1 MLD Water Treatment Plant (WTP) System

BOOT Order

F&B company

₹ ~22 crores p.a.

7 years Contract

500 KLD Water Treatment Plants, 600 KLD ETP, 100 KLD Evaporation Capacity & 25 KLD STP along with O&M

BOOT Order

F&B company

₹ 140.08 crores

10 years Contract

1500 KLD ZLD System, a 1500 KLD Water Treatment Plant, 120 KLD Sewage Treatment Plant with O&M



Financial Performance Summary

Consolidated

Rs. In lakhs. (except EPS)

Particulars	Q1 FY26	Q1 FY25	YoY	Q4 FY25	QoQ	FY25
Revenue from Operations	2,062.0	800.6	158%	1,299.2	59%	3,682.2
Other Income	40.1	72.0	-	193.6	-	552.3
Total Revenue (I)	2,102.1	872.6	141%	1,492.7	41%	4,234.5
Expenses						
Purchases of Stock-In-Trade	917.9	809.3	-	-	-	1,297.9
Changes in Inventories of Finished Goods, Stock-In-Trade and Work-In-Progress	-109.8	-636.9	-	421.9	-	-249.6
Employee Benefits Expense	304.5	293.2	4%	267.3	14%	944.7
Other Expenses	391.7	281.8	39%	244.7	60%	862.6
Total Expenses (Excluding Finance costs & Depreciation) (II)	1,504.3	747.3	101%	933.9	61%	2,855.6
EBITDA (III = I - II)	597.8	125.2	377%	558.8	7%	1,378.8
Finance Costs (IV)	77.9	8.6	810%	60.0	30%	103.0
Depreciation and Amortization Expense (V)	41.7	17.1	144%	11.3	270%	76.4
Profit / (Loss) Before Share of Profit/(Loss) From Associates (VI = III - IV - V)	478.2	99.6	380%	487.6	-2%	1,199.5
Share of Profit/(Loss) From Associates (VII)				-1.8		0.0
Profit / (Loss) Before Tax (VIII = VI - VII)	478.2	99.6	380%	489.3	-2%	1,199.5
Total Tax (Benefits) / Expense	-121.4	-68.3	78%	-108.4	12%	-288.2
Net Profit / (Loss) for the year	356.8	31.2	1042%	381.0	-6%	911.3
Basic EPS (In Rs.)	2.61	1.62		3.11		6.87

Company Overview



Established in 2010, a leader in environmental conservation, championing sustainable practices with innovative technologies and a commitment to Zero Waste Philosophy, delivering transformative environmental solutions.

High-performance Water Reclamation Enterprise

The company has established a strong foothold in Water & Wastewater Management and Solid Waste Management solutions with cutting-edge manufacturing facilities in India & Oman.

As a leading water reclamation business, it offers high-performance, end-to-end solutions in integrated water management.

Operating Models

- EPC
- DBO
- BOOT
- BOT
- O&M
- PPP projects
- Equipment supply & beyond.

100+

100+ Projects delivered and processed substantial amounts of waste and wastewater.

17 MLD

17MLD+ Installed Capacity – Restoration of Wastewater to fresh water

50 TPD

50 TPD Installed Capacity - Solid & Hazardous waste restoration

100 TPD

100 TPD Installed Capacity - Hydrocarbons restoration

175 Kw

175 Kilowatt of Waste to energy (Upcoming)

40 TPD

40 TPD Installed Capacity - Waste oil restoration

Our Mission for a Closed-Loop Ecosystem

Our Mission

We are committed to delivering high-quality environmental engineering services with a focus on safety, sustainability, & continuous improvement.

Zero waste philosophy

We follow Zero waste philosophy, making sure that no waste returns to nature after resource use.

Sustainable Circular Economy

Committed to sustainable circular economy, where resources are reused & recycled, creating a closed-loop system benefiting environment & community.



The Felix Approach



Recycling



Re-using (wastewater)



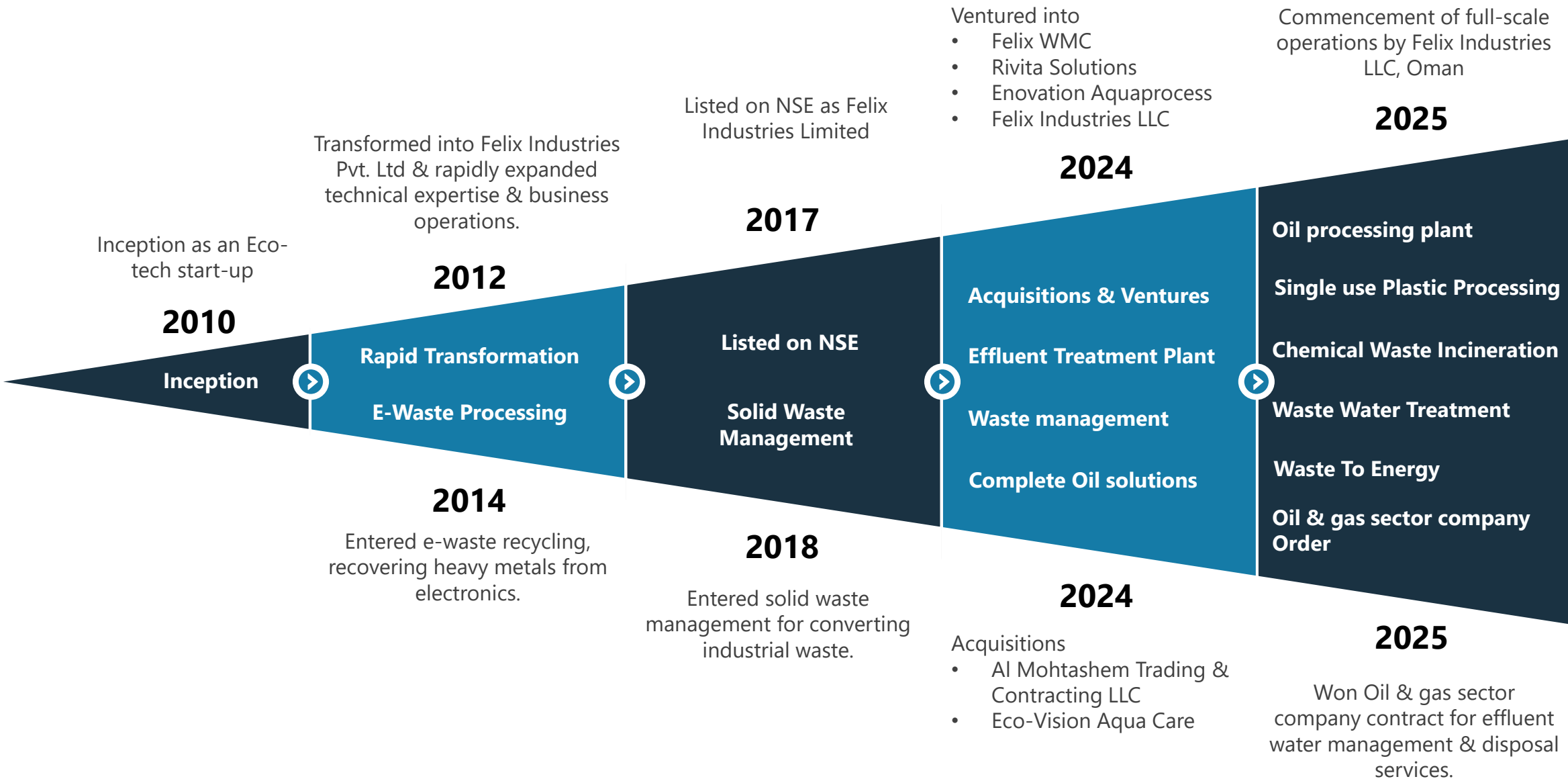
Recovering (products)



Reducing (effluents)



Journey of Growth & Capability Expansion



Spanning Continents, Bridging Industries

With a presence that spans across India and extends to international markets, the company caters to a variety of sectors, bolstering its dedication to sustainable practices in waste, wastewater, and solid waste management.

Manufacturing locations

Gujarat, India (~1,460 sq. mt.)

Sumair, Oman (~18,000 sq. mt.)

Company Headquarters

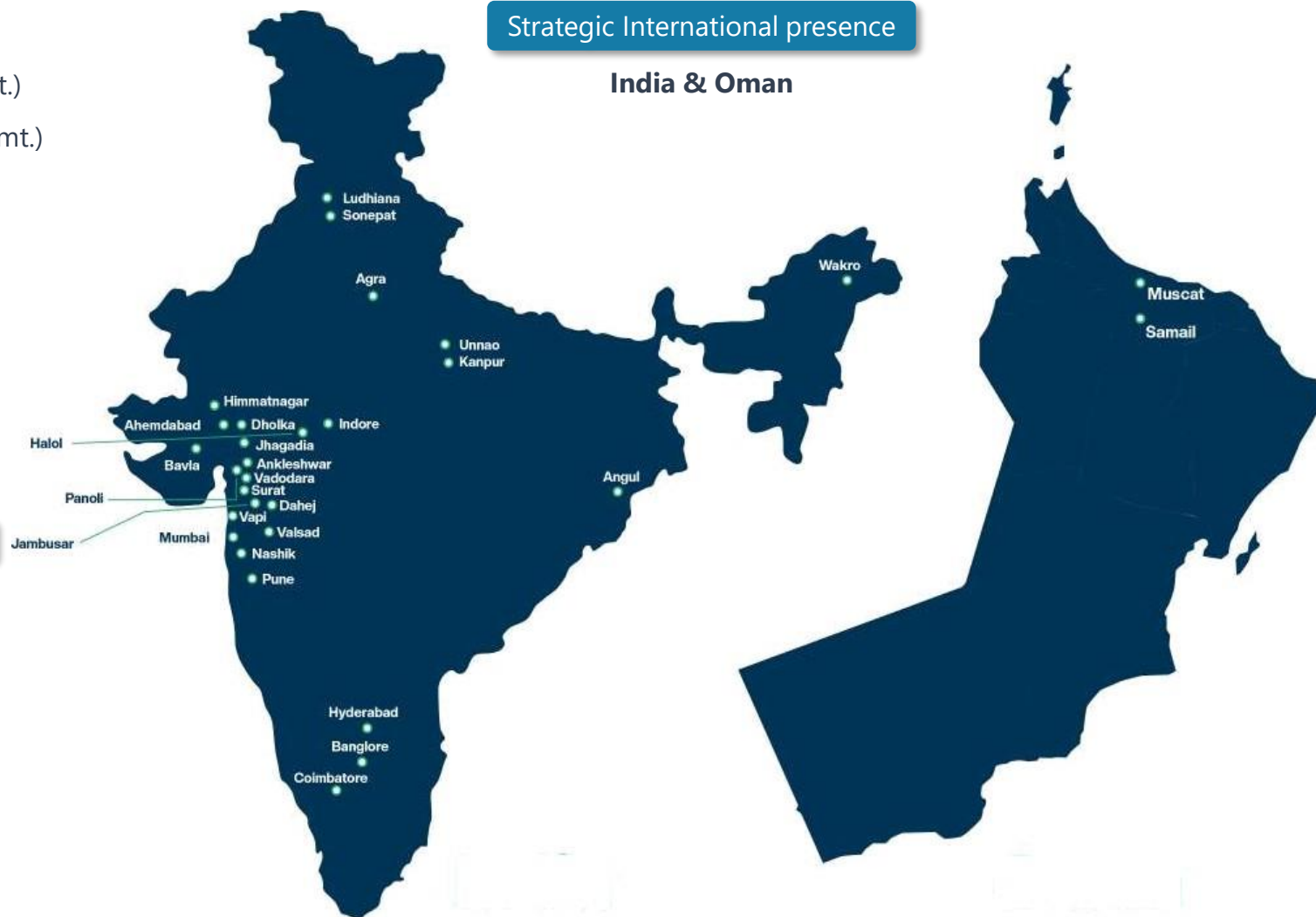
Ahmedabad, Gujarat, India

100+ Projects delivered

Delivered 100+ projects in various locations across India & the UAE.

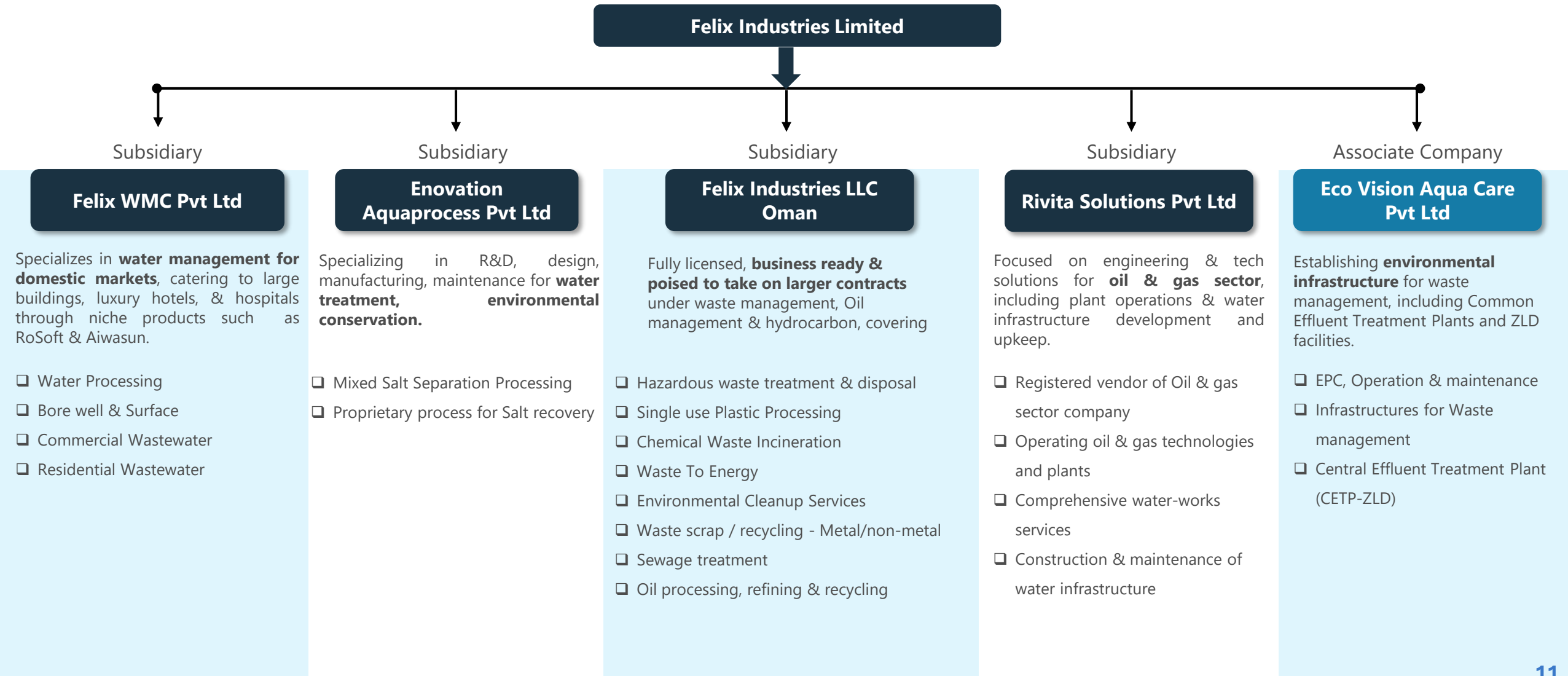
Strategic International presence

India & Oman



Diverse Horizons: Serving Multiple Industries

- Textiles
- Pharmaceuticals
- Oil & Gas
- Dyes & Pigments
- Agro Intermediates
- FMCG
- Steel & Alloys
- Specialty Chemicals
- Plastic & Plastic Products
- Power Plants
- Food & Dairy
- Construction & Building
- IT Parks
- Tanneries
- Glass & Glass Products



Pioneering Leadership: The Driving Force



Mr. Vinay Patel



Mr. Ritesh Patel



Mr. Divyanshu Varma



Mr. Manish Pillai



Mr. Dhaval Thakore



Mr. Kunal Shah



Mr. Kalyan Patil



Mr. Dishant Bhanti



Suleyman Al Harthi



**Shaikh Said Ghanim
Mohammed**



Ahmed Al Mashani



Fouzan Mohtasham



**Hamdan Khamis Saeed
Binqeraimesh Alwheibi**



Mr. Taufik Ali Siddiqui



Mr. Rushi Jani

State-of-the-art manufacturing hubs in Gujarat (~1,460 sq. mt.) & Oman (~1,8,000 sq. mt.) are both technologically sophisticated and eco-friendly, with specialized engineering skills to adapt each technology to the precise needs of customers, reflecting its dedication to manufacturing excellence.

Engineering and Manufacturing Prowess at Felix

Wastewater Restoration

17 MLD

Restoration of Wastewater
to fresh water

(Installed Capacity)

Innovative wastewater treatment to purify industrial water for reuse, reducing pollution & conserving water resources.

Oil processing plant

100

Tonnes Per Day

(Installed Capacity)

Recycles used oil into quality reusable high-quality oil, optimizing resources & reducing environmental impact.

Chemical Waste Incineration plant

100

Tonnes Per Day (Rotary Kiln)

(Installed Capacity)

Eco-friendly Solid Waste Disposal of chemical waste, complying with strict regulations.

Single use Plastic Processing plant

48

Tonnes Per Day (Pyrolysis)

(Installed Capacity)

Advanced recycling tech to turn plastic waste into reusable materials.

Waste To Energy plant

Under commissioning stage

(Upcoming Capacity)

The project is in commissioning phase, anticipated to be operational soon.

Effluent Treatment Plant
(ETP & CETPs)

Sewage Treatment & Recycling Plant

Brine Concentration & Recovery

Incineration

Pyrolysis

Torrefaction

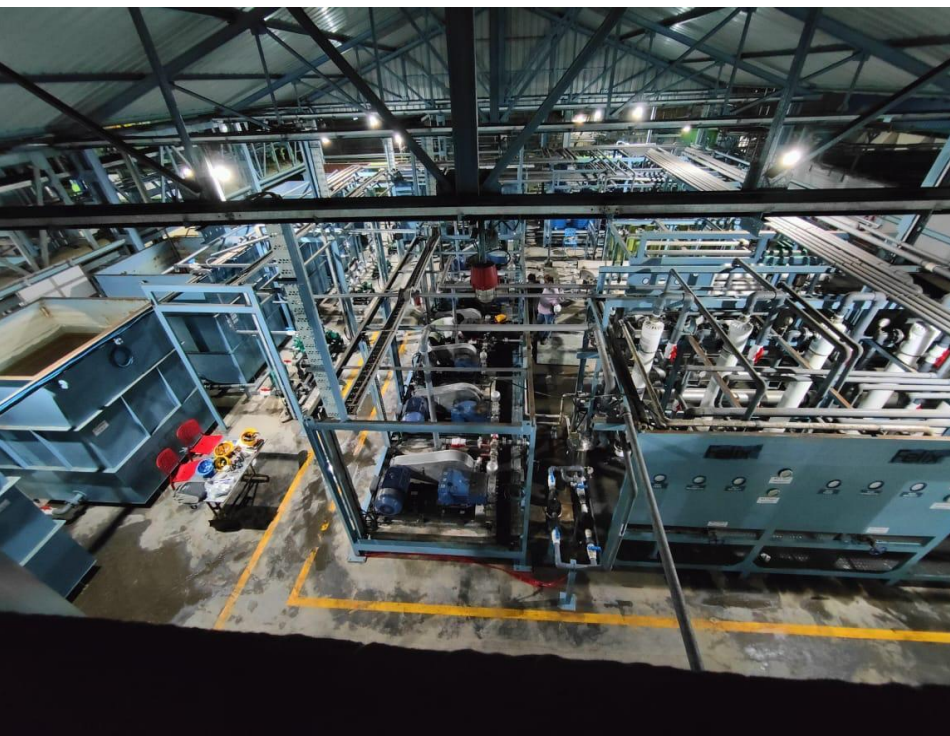
Mixed salt separation system

Zero Liquid Discharge plant

Solvent Extraction process

Our State-of-the-art plants & projects

Felix®

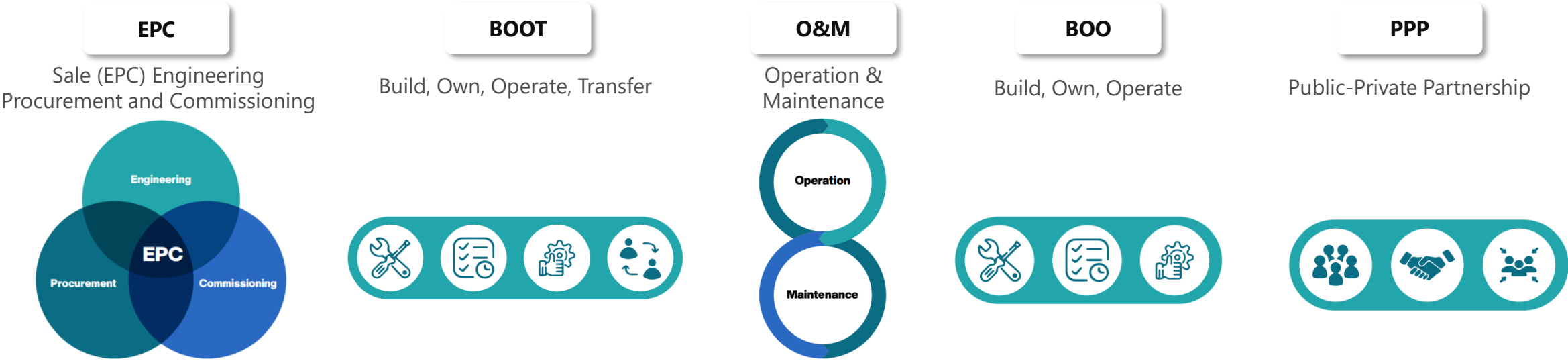




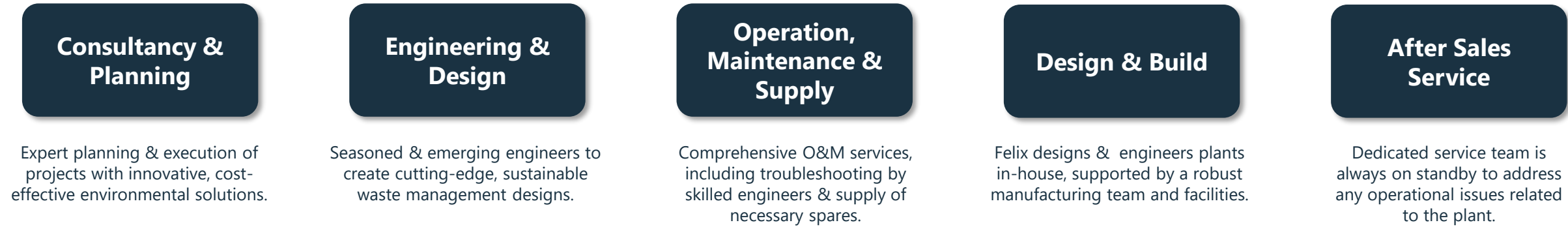
Operational Excellence: Diverse Contract Models



A variety of operating models, including EPC, BOOT, O&M, and PPP, to align with diverse client needs and project demands, ensuring tailored service delivery.



Comprehensive Project Lifecycle Services





Felix Industries: Key Competitive Edge



Rapid Scaleup Sets Stage for Exponential Growth

Since inception, rapidly scaled operations through strategic expansion & acquisitions with a strong foothold in environmental solutions.

Now securing significant contracts from prominent companies, positioning it for further exponential expansion.



A Legacy of High-Impact Environmental Solutions

Renowned for delivering high-performance, comprehensive solutions with proprietary processes.

Track record of 100+ successful projects showcases ability to recycle significant volumes of water, wastewater, and solid waste daily.



Operational Superiority & Manufacturing Excellence

Excels in operational excellence, with cutting-edge facilities focused on eco-friendly practices & technology solutions for water, wastewater, and solid waste.

Pioneering in specialized sectors like hydrocarbon recycling and green hydrogen, set to secure a commanding market presence.



Diversified Operations for Comprehensive Solutions

Operates under various models including EPC, DBO, BOOT, BOT, O&M, and PPP, as well as equipment supply.

Serves a wide range of industries, such as metro rail, food & beverage, pharmaceuticals, airlines, steel, oil refineries, and more, offering comprehensive project lifecycle services.



ESG-Driven Business Model

With ESG principles embedded in its business, Felix Industries is at the forefront of sustainability.

Committed to deliver top-tier environmental engineering services with focus on safety, and continuous improvement, while championing a Zero-waste philosophy to foster a sustainable circular economy.



Well positioned to capitalise on opportunities in Water & Waste Management

Well positioned to capitalize on current water scarcity issues and gap between water supply and demand.

With a growing waste generation problem and untreated waste issues, the company is set to benefit from water and wastewater treatment market's growth prospects.

Business Overview & Segments





Business Segments



Water & Wastewater Management

1. **Industrial Wastewater**
 - Effluent treatment plants
 - Common Effluent treatment plants
 - Effluent recovery systems
 - Zero Liquid Discharge
2. **Commercial & Domestic Wastewater**
 - Sewage treatment plant
 - Sewage recycling plant
3. **Fresh Water**
4. **Brine Concentration & Recovery**



Solid Waste Management

1. **Hazardous Industrial Waste**
2. **Municipal Solid Waste**
3. **Plastic Waste**



Hydrocarbon Recycling

1. **Hydrocarbon Treatment & Management**



Green Hydrogen

1. **Hydrogen production using renewable energy, resulting in minimal carbon emissions.**

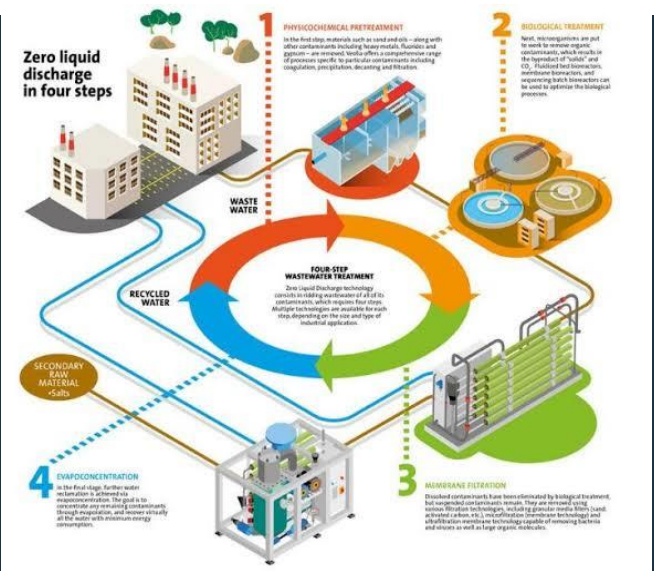
Wastewater treatment is the means by which water that has been used and/or contaminated by Industries, Humans or nature is restored to a desirable quality. Treatment may consist of chemical, biological, or physical processes or a combination thereof.

Felix Services & Capabilities

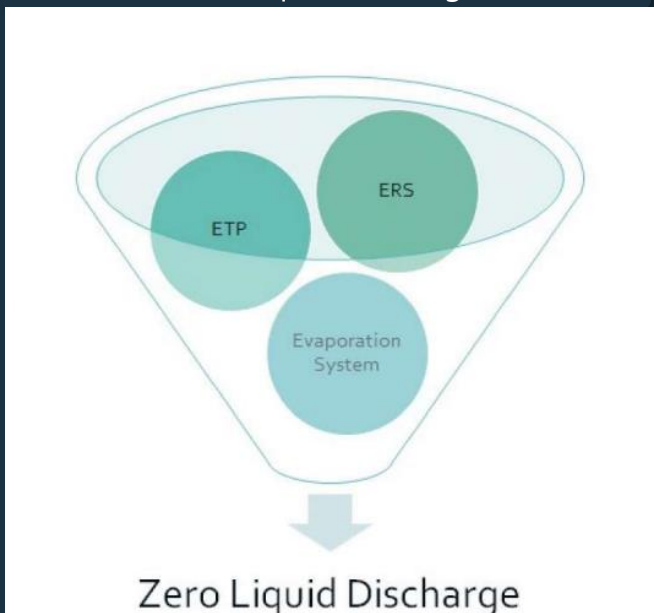




Industrial Wastewater Management



Zero Liquid Discharge



Effluent Treatment Plants (ETP)

Felix Industries specializes in ETPs, expertly treating wastewater from diverse sources to remove contaminants before safe discharge or reuse.



Common Effluent Treatment Plants (CETP)

CETP centralized facility is designed to treat wastewater from multiple industries, ensuring that the effluent meets environmental standards before being discharged.



Effluent Recycling Systems (ERS)

Felix Industries offers advanced ERS that extract heat from wastewater, yielding energy savings, operational efficiency, and environmental benefits.



Zero Liquid Discharge (ZLD)

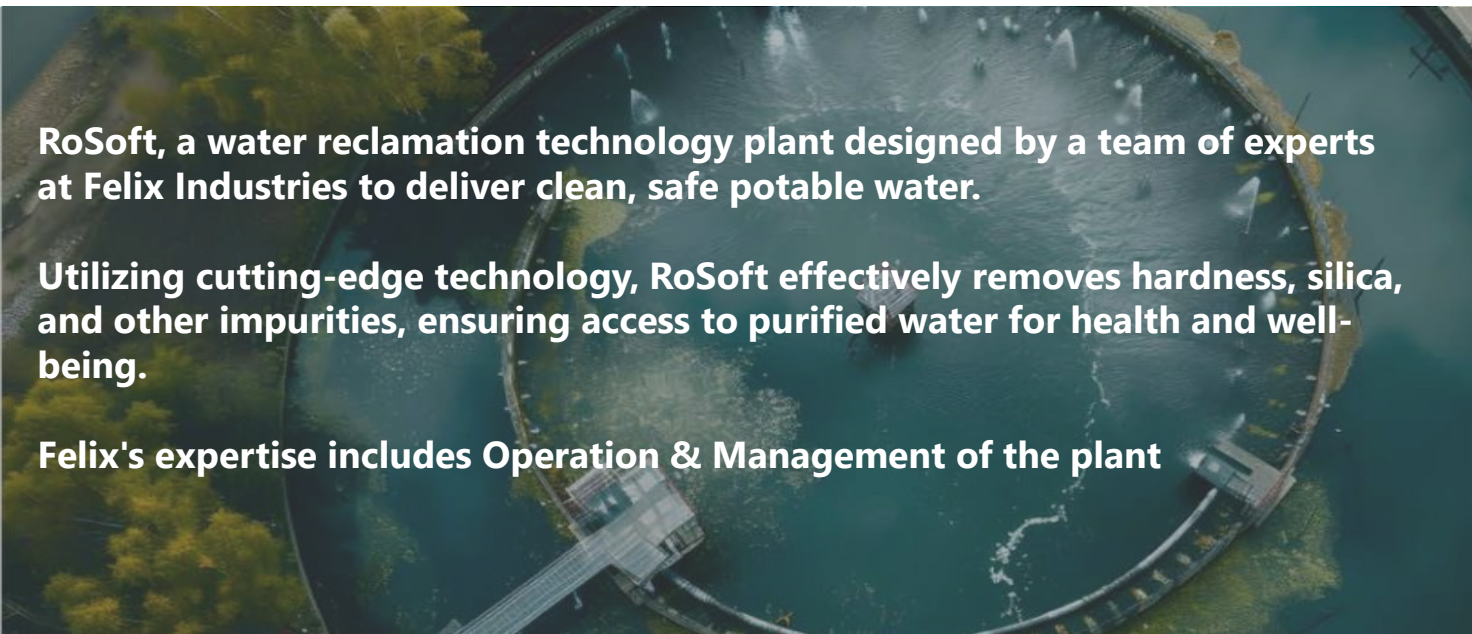
Felix Industries excels in ZLD technology, ensuring complete wastewater treatment and recycling, minimizing environmental impact, and maximizing water recovery.



Sewage Treatment Plants (STP)

Felix Industries specializes in Sewage Treatment Plants (STP), effectively purifying wastewater through multi-stage processing to remove contaminants before environmental release.

Our Fresh Water Solutions - Rosoft



RoSoft

**The Felix
Technique**



Advanced water purification processes

Ensuring water safety and quality

Access to healthier water for daily use

Supporting public health through water reclamation



Aiwasun: A green revolution in water Heating & cooling



Aiwasun Air Source Heat Pump

Heat Pump refrigeration technology extracts heat from surrounding air & transfers it to the Water

70%

Electrical energy Savings



Aiwasun Cooling Water Solutions

~40% Electrical energy Savings

Eco-Friendly Innovative Technology

Harness atmospheric air to generate hot water, requiring minimal electricity for cooling.

Constant Supply

Provides a centralized water system that delivers cold water 24/7, even in summer.

Scientific Approach

Utilizes the principles of the Carnot cycle, similar to refrigerators and air conditioners, to produce cold water.

Heat Transfer Mechanism

CWS is a device that efficiently transfers heat, moving it from one place to another & from lower to higher temperatures, akin to a domestic refrigerator.



Residential



Commercial



Brine Concentration & Recovery

Felix Industries specializes in "Brine Concentration & Recovery," focusing on environmentally sustainable methods to concentrate and reclaim salts from high-salinity wastewater in sectors such as desalination and mining.



Our Capabilities

Concentration Methods

1. Evaporation
2. Membrane Filtration

Recovery Techniques

1. Crystallization
2. Electrodialysis

Zero Liquid Discharge (ZLD) Systems

1. Achieve near-total water recovery from brine with ZLD systems.
2. Lower waste and environmental footprint from brine disposal.
3. Promote resource recovery and sustainability.

Solid Waste Management

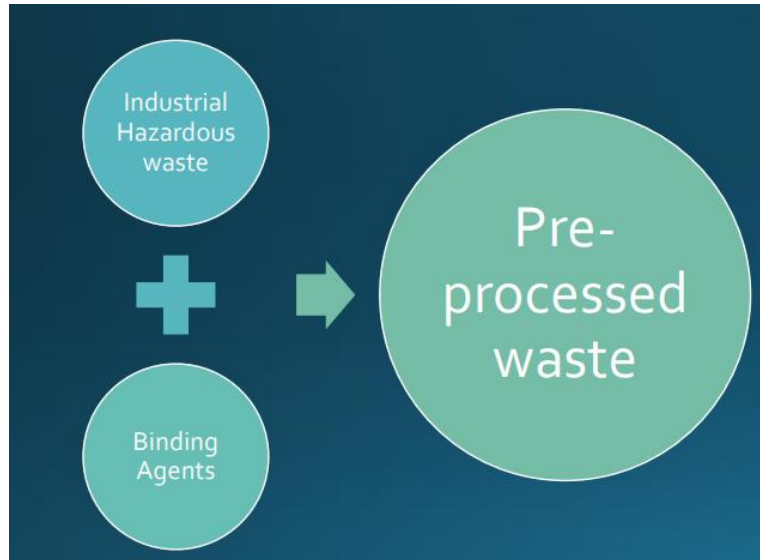
Solid waste treatment is the process of managing, treating, controlling and disposing of solid waste in a way that is safe and environmentally responsible. The solid waste may consist of Municipal Solid Waste, Industrial Solid Waste, Biomedical Waste, Household and other Waste.

Felix Services & Capabilities



Hazardous Industrial & Municipal Waste

Adept at converting hazardous industrial waste into safer pre-processed forms, utilizing techniques like stabilization, solidification, and neutralization to mitigate risks and prepare for disposal or further treatment.



Municipal Solid Waste

The company specializes in the torrefaction of MSW and biomass, creating valuable fuel materials, and in the high-temperature incineration of hazardous waste, effectively reducing toxicity and volume.



Torrefaction

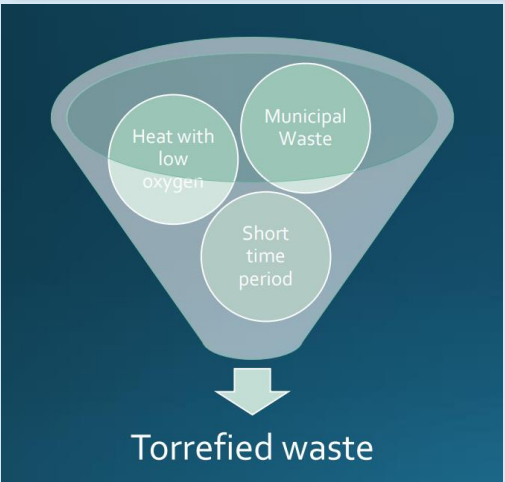


Incineration

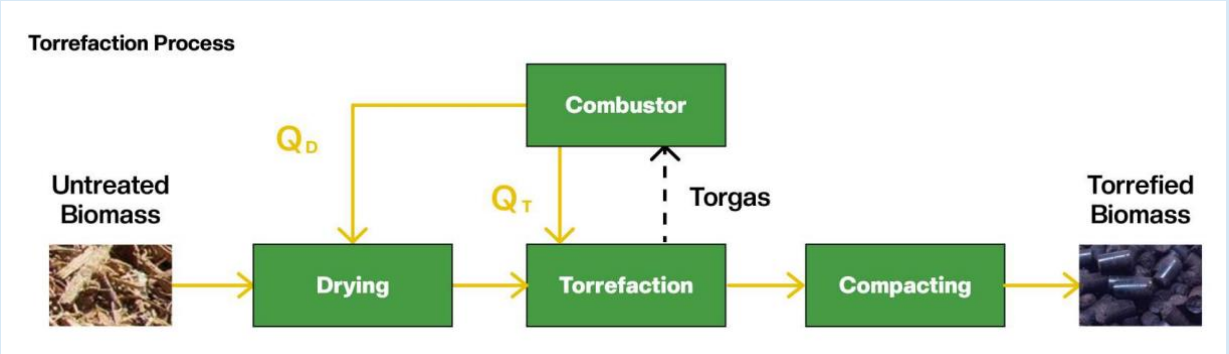
Torrefaction & Incineration

Hazardous Industrial & Municipal Waste processes

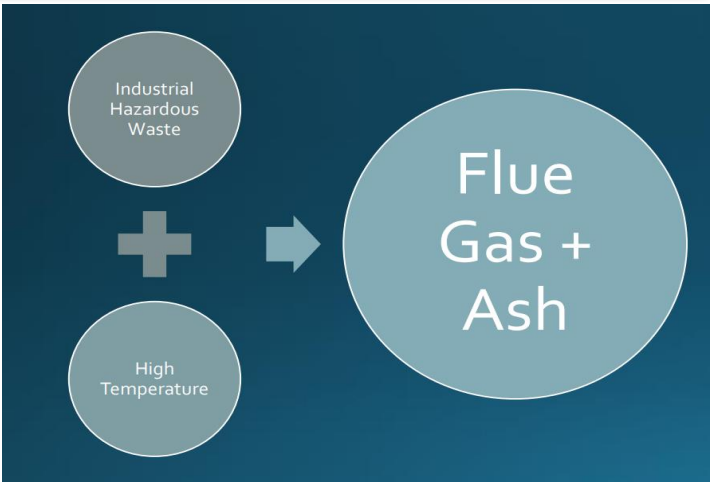
Torrefaction Process



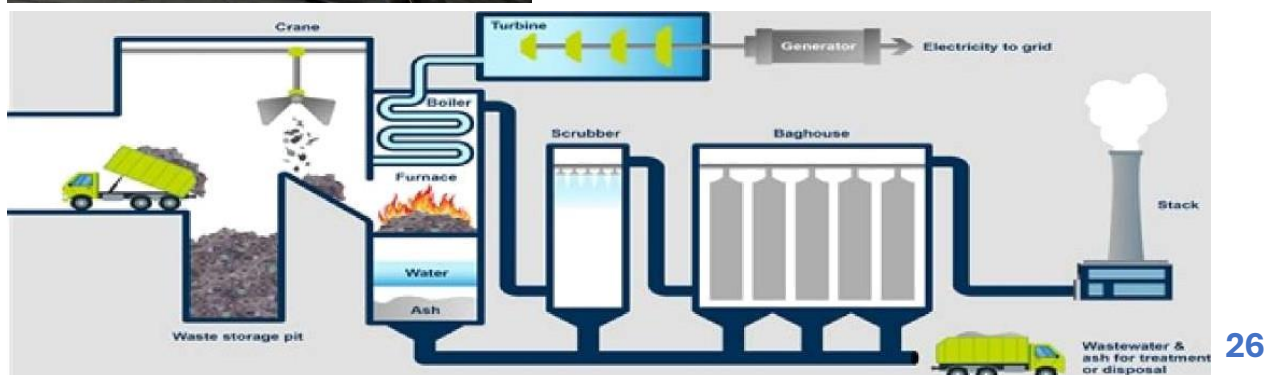
Torrefaction is a thermal pretreatment process where biomass or MSW is heated in a low-oxygen environment, producing a carbon-rich material for fuel or further refinement.

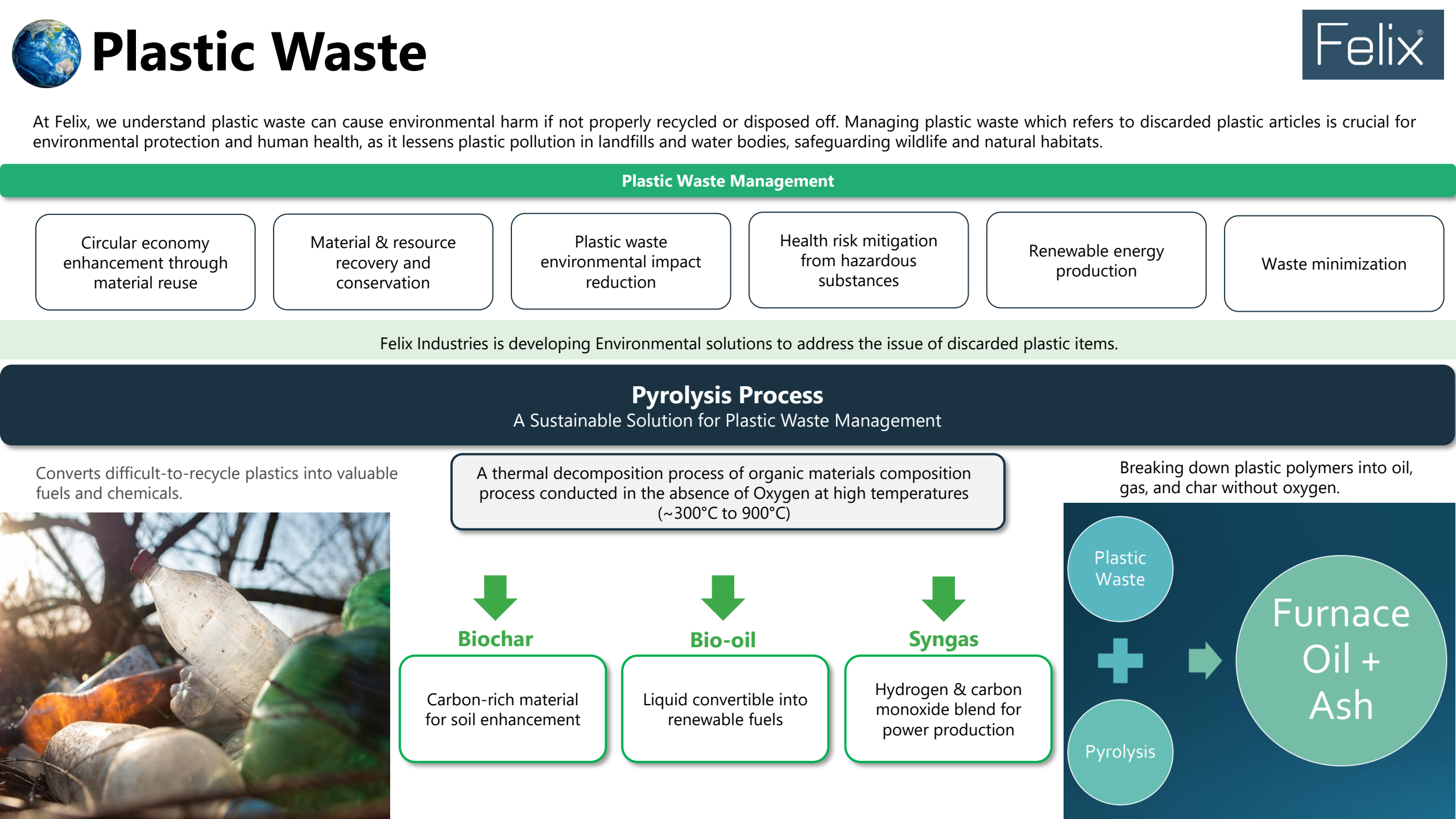


Incineration System



Incineration is a thermal process that safely burns hazardous waste at high temperatures, neutralizing toxins and reducing waste to non-hazardous ash and gases.







Hydrocarbon Recycling

Sustainable hydrocarbon treatment, transforming waste into recycled carbon fuels and reducing non-renewable waste

Recovery and reprocessing of hydrocarbon-based materials, such as plastics and oils, to reduce waste and conserve resources.

Hydrocarbon Recycling & Management

Collection

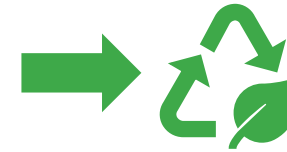
Collection of hydrocarbon waste from diverse sources.

Sorting

Sorting by type and contamination for efficient processing.

Processing

Converting waste into usable hydrocarbons via pyrolysis and chemical recycling.



Recycled hydrocarbons are repurposed into:

- ✓ New Oil products
- ✓ Fuels (e.g., diesel, gasoline)
- ✓ Feedstock for chemical manufacturing

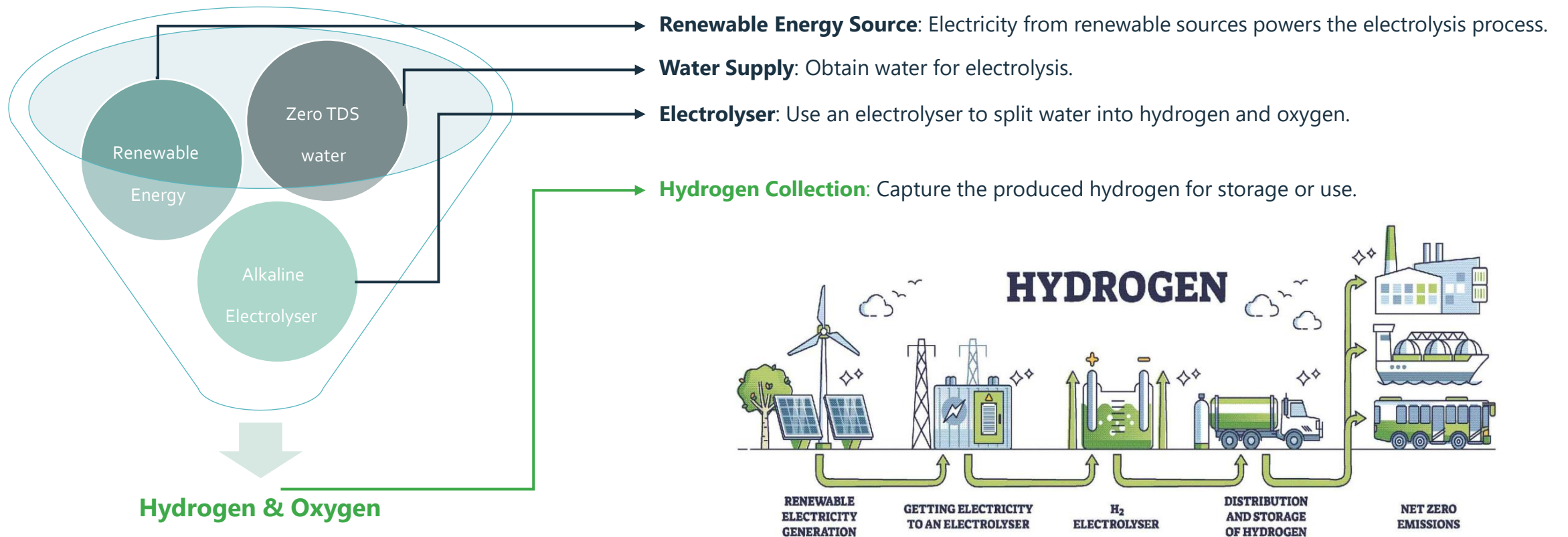


Green Hydrogen



Felix Industries is developing expertise in the production of green hydrogen, utilizing renewable energy sources for water electrolysis (to split water into hydrogen and oxygen) to deliver a sustainable and emission-free energy solution.

Green hydrogen Production



Industry Scenario & Market Opportunity





Current Scenario: Water & Wastewater Management



Global water scarcity



Felix philosophy of circular economy

Wastewater treatment at Felix involves purifying water that has been polluted by industrial activities, human use, or natural sources to an acceptable quality level. This restoration process may include a mix of chemical, biological, or physical methods.

Favorable Opportunities & Government Initiatives





Current Scenario: Solid Waste Management

Waste generation in India

0.7 kg per person per day
in 2025
4-6 times more than in 1999

Total Waste generation - India

62 million tons
of waste
Only 43 MT collected, with
balance left untreated or in
landfills.

Municipal solid waste generation

3.8 billion tons
of waste generation globally
in 2050 vs 2.1 billion tonnes
in 2023

Cost of waste management

USD 640.3 billion
global direct cost of waste
management could reach
\$USD 640.3 bn in 2050

Principal waste materials

**Solid waste, Plastic waste
& E-waste**

Future Waste generation in India

165 MT
million tons of waste by 2030

2.7 billion

People globally do not have
their waste collected

540 million tons (MSW)

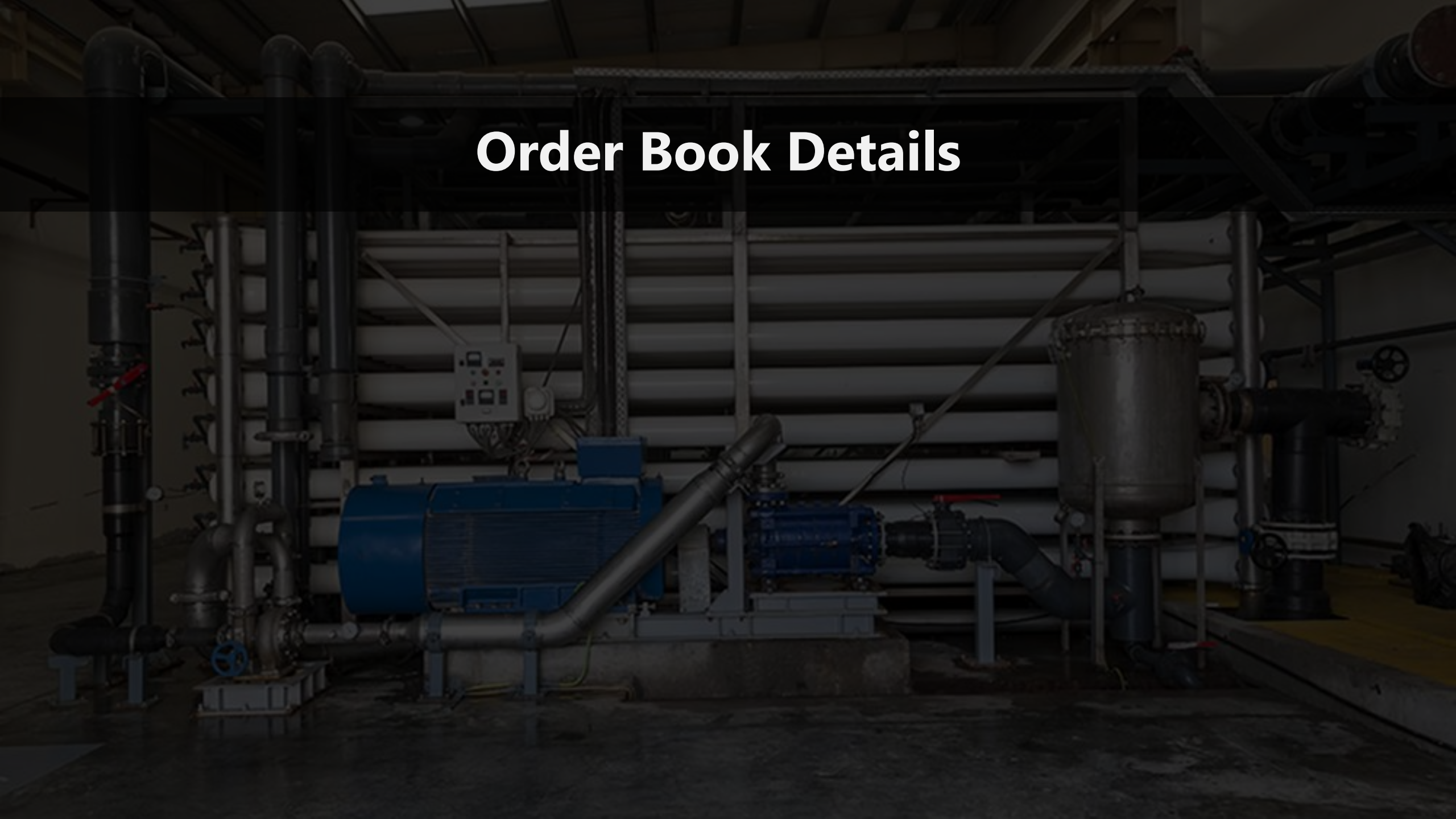
~27% of total global waste in
not being collected



Felix philosophy of circular economy

A circular economy could yield net savings in waste management costs, cut emissions, and lower water usage by separating waste production from economic growth through waste reduction, eco-friendly business methods, and comprehensive waste management.

Order Book Details





Order Inflow in Q1 FY26

F&B company

BOOT

July 2025

₹ 140.08 crores

10 years Contract

- ❑ **Order to be executed under BOOT** – 1500 KLD Zero Liquid Discharge (ZLD) System, a 1500 KLD Water Treatment Plant (WTP), and a 120 KLD Sewage Treatment Plant (STP), along with O&M.
- ❑ Location: **Gujarat**

F&B company

BOOT

June 2025

₹ ~22 crores p.a.*

7 years Contract

- ❑ **Order to be executed under BOOT** - 500 KLD Water Treatment Plants (WTP), 600 KLD ETP, 100 KLD Evaporation Capacity & 25 KLD STP along with O&M.
- ❑ Duration: **O&M** to begin from 2025-26
- ❑ Location: **Gujarat**

Pharmaceutical company

EPC

May 2025

₹ 7.58 crores

Execution Time - 3 Months

- ❑ **Purchase Order** - 1 MLD Water Treatment Plant (WTP) System
- ❑ Supply, Installation, Testing, and Commissioning (SITC) of Mechanical Equipment.
- ❑ Location: **Gujarat**

Infrastructure & Construction company

EPC

April 2025

₹ ~32.57 crores

Execution Time - 9 Months

- ❑ **Purchase Order** - 2 MLD Common Effluent Treatment Plant (CETP) Systems
- ❑ Supply, Installation, Testing, and Commissioning (SITC) of Mechanical Equipment.
- ❑ Location: **Gujarat**



Recent Triumphs

Oil & gas sector company

BOO

₹ ~2.20 crores

3 years Contract

- ❑ **Contract Order from oil & gas explorer/producer** - Processing of effluent water for service water & surface water disposal
- ❑ **O&M of Effluent Water Management** for processing of service water & surface water disposal
- ❑ Location: **Gujarat**

Oil & gas sector company

BOO

₹ ~1.90 crores

3 years Contract

- ❑ **Contract Order from oil & gas explorer/producer** - Hiring of Facilities for processing of effluent water for service water & surface water disposal
- ❑ **O&M of Effluent Water Management** for processing of service water & surface water disposal
- ❑ Location: **Gujarat**

Oil & Gas sector company

BOO

₹ ~1.87 crores

3 years Contract

- ❑ **Contract Order from oil & gas explorer/producer** - Installation & O&M of Water Injection Facility
- ❑ Location: **Gujarat**

Steel sector company

EPC + O&M

₹ ~1.43 crores

2 – 3 months contract

- ❑ **Purchase order** of 75 KLD Zero Liquid Discharge (ZLD)
- ❑ Location: **Gujarat**

F&B company

O&M

₹ ~63.64 crores

10 years Contract

- ❑ **Completed** - Design, supply, installation, & commissioning of 500 KLD ZLD System & 500 KLD Water Treatment Plant (WTP)
- ❑ Comprehensive O&M services for 10 years.
- ❑ Location: **Gujarat**

Robust Order Fulfilment: A Track Record of Success

Textile Dyeing & processing company

EPC

- ❑ Project : **400 KLD-125 KLD-ZLD**
- ❑ Type: **Wastewater** - High Strength

Pharmaceutical Cluster CETP

BOOT + O&M

- ❑ **3500 KLD** Zero Liquid Discharge
- ❑ Type: High Strength

Dairy sector company

BOOT + O&M

- ❑ **1000 KLD** - Waste Water Recycled to Fresh Water
- ❑ Type: Medium Strength

Waste Management company

BOO

- ❑ **Solid Waste management**
- ❑ Type: Biological Waste

Metro Rail Ahmedabad company

EPC

- ❑ Awarded by Gannon & Dunkerly + PSP Developers - Metro Rail Wash Water
- ❑ Type: **Wastewater** - High Strength

Airline company

BOO

- ❑ Wastewater Reclamation
- ❑ Type: High Strength

Aromatic Speciality Chemicals company

BOOT + O&M

- ❑ **500 TPD** - Waste Streams to Zero Emission
- ❑ Type: High Strength

F&B company

BOOT + O&M

- ❑ **500 TPD** - Waste Streams +Solid Waste Management to Zero Emission
- ❑ Type: **Waste Management** - High Strength

Aluminium sector company

EPC

- ❑ **Biological Waste to Incineration** Process
- ❑ Type: **Wastewater** - High Strength

Steel company

EPC

- ❑ **250 KLD** Zero Liquid Discharge
- ❑ Type: **Wastewater** - High Strength

Dye & pigments company

EPC + O&M

- ❑ **Wastewater Reclamation** 100 KLD Evaporation Volume Reduction to 25 KLD
- ❑ Type: High Strength

Oily Sludge/Waste Oil company

BOO

- ❑ Oily Sludge/Waste Oil
- ❑ Type: **Hazardous Waste**

Petro-Chemical Refinery company

BOO

- ❑ Oily Sludge/Waste Oil
- ❑ Type: **Hazardous Waste**

The content in this presentation may contain forward-looking statements, including projections and expectations regarding future events and developments. These statements are based on our current beliefs and assumptions and are subject to various risks and uncertainties. Actual outcomes may differ significantly from those projected or anticipated. We encourage you not to place undue reliance on these forward-looking statements, which reflect our opinions only as of the date of this presentation.

This presentation is not intended to be, and should not be construed as, an offer to sell or a solicitation of an offer to buy shares in Felix Industries Limited. We accept no liability for any loss or damage that may arise from reliance on the information provided or any management statements.

Please note that numbers for previous periods may have been regrouped or rearranged for comparison purposes and better analysis. Growth rates have been calculated based on reported financial information. You are advised to consult our most recent annual reports and regulatory filings for a thorough discussion of the risks and uncertainties we face. While we will attempt to present important factors that may affect our predictions, we are not obligated to revise or publicly release the results of any revisions to these forward-looking statements in light of new information or future events.

Felix[®]

Thank You

Felix Industries Limited

info@felixindustries.co

+91- 079 26463658



Ernst & Young LLP
Investor Relation Advisory

Vikash Verma
Vikash.Verma1@in.ey.com

Sumedh Desai
Sumedh.desai@in.ey.com